

THE JOURNEY
OF A

Lifetime

2016



ARANUI 5

DISCOVER THE MARQUESAS ISLANDS
THE ARANUI WAY



Precious Cargo

JOIN THE VOYAGE OF A LIFETIME ON THE WORLD'S MOST LUXURIOUS FREIGHTER

The mystical, far-flung Marquesas archipelago at the northernmost tip of French Polynesia in the Pacific Ocean has long held a fascination for the romantic adventurer. The overwhelming allure of this group of 12 volcanic islands lies not just in their dramatic natural beauty but also in the rich and turbulent history of the Marquesan people.

While the Marquesas were discovered by European explorers less than 300 years ago, it is believed they have been home to the Polynesian people for about 2000 years.

For the last 50 years, Aranui's freighter ships have maintained a vital lifeline between the Marquesas and the outside world. In 1985, Aranui, which translates as 'The Great Highway' in Tahitian, introduced the first 'comfortable' passenger/freighter hybrid, offering travellers a unique opportunity to explore the six inhabited islands of this remote archipelago.

Now, 30 years on, passengers can experience the 14-day round trip from Tahiti in unsurpassed comfort and style on the brand new, custom-designed Aranui 5 freighter cruise ship.

The state-of-the-art Aranui 5, which accommodates just 254 passengers, combines all the exciting elements of a working vessel with the sophistication of a modern cruise ship, making it an even more appealing option for those who want to experience this once-in-a-lifetime adventure.

There has never been a better time to unlock the secrets of the magical Marquesas, nor a better way to get there – in the capable hands of Aranui's highly skilled team of sailors whose descendants have been sailing these waters for generations.

Discovery

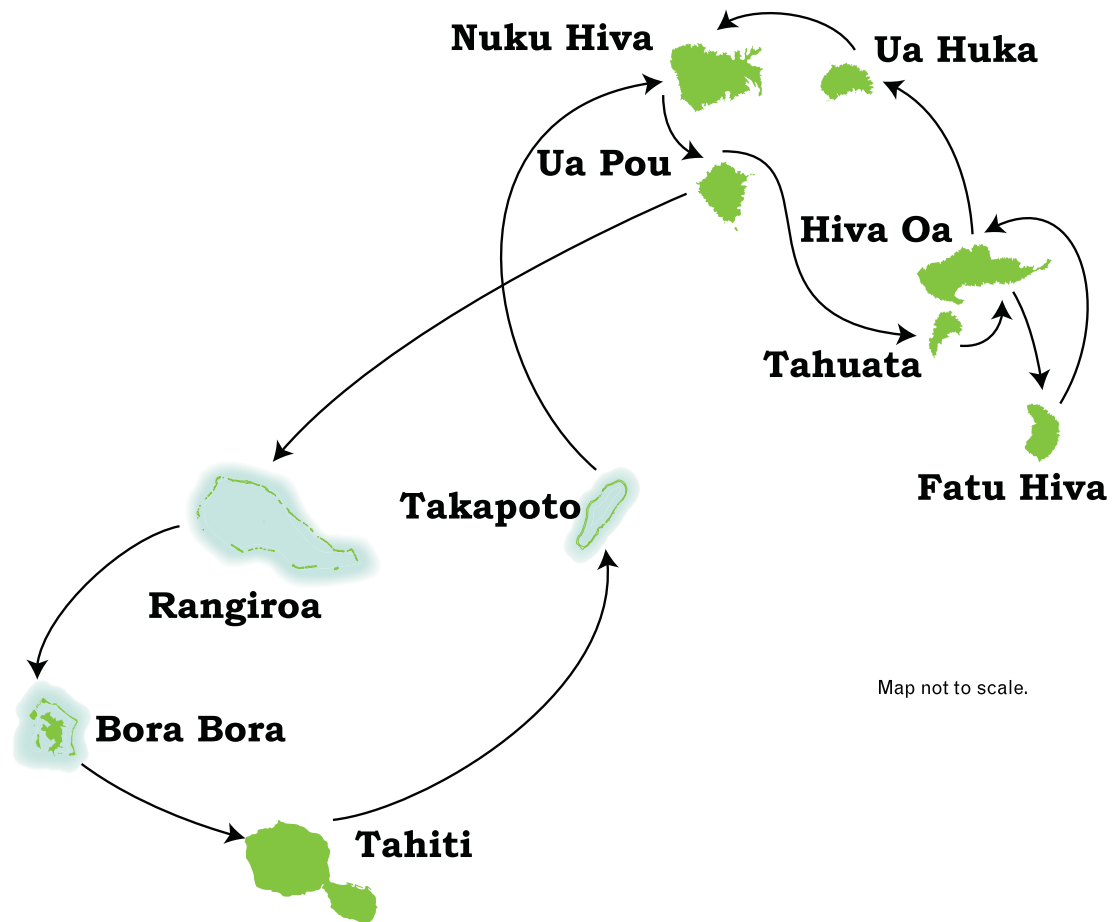
EXPLORATION, ADVENTURE

During the two-week, 3000-kilometre round-trip voyage, Aranui 5 visits the Marquesan islands of Nuku Hiva, Ua Pou, Tahuata, Hiva Oa, Fatu Hiva and Ua Huka, as well as Takapoto and Rangiroa in the Tuamotu Archipelago, and Bora Bora in the Society Islands. On guided shore excursions you will follow in the footsteps of Paul Gauguin, Jacques Brel, Thor Heyerdahl and Robert Louis Stevenson and find out why they were so captivated by these islands.

The itinerary includes a visit to Gauguin's former home on Hiva Oa; 4WD trips through verdant, unspoilt valleys and up winding mountain

tracks to ancient sacred sites; and excursions to villages, museums, artisan markets and churches. There are also beach picnics, traditional feasts in local restaurants and the chance to join glorious mountain hikes, all accompanied by our team of expert multilingual guides. Optional extras include deep-sea fishing, horse riding and scuba-diving.

Of course, a big part of the voyage revolves around the fact that you're on a working vessel. To witness Aranui's muscular, talented sailors loading and unloading cargo – and the sense of excitement at the remote villages where the ship docks – is an experience you're unlikely to forget.



Map not to scale.

Day 1	Depart Papeete, Tahiti (9.30am)	Day 9	Ua Huka: Vaipae/Hane/Hokatu
Day 2	Tuamotu Archipelago: Takapoto	Day 10	Nuku Hiva: Taiohae – Ua Pou: Hakahau
Day 3	At Sea	Day 11	At Sea
Day 4	Nuku Hiva: Taiohae/Hatiheu/Taipivai	Day 12	Tuamotu Archipelago: Rangiroa
Day 5	Ua Pou: Hakahau/Hakahetau	Day 13	Society Islands: Bora Bora
Day 6	Hiva Oa: Puamau/Atuona	Day 14	Arrive Papeete, Tahiti (9am)
Day 7	Fatu Hiva: Omoa/Hanavave		
Day 8	Tahuata: Vaitahu		

CTPM reserves the right to alter or curtail the itinerary or the ports of call as deemed necessary.

Ka' Oha Nui

WELCOME ABOARD

FROM THE MOMENT THE ARANUI 5 SETS SAIL YOU WILL BE IMMERSSED IN ALL THINGS POLYNESIAN – FROM THE WARMTH OF THE PEOPLE AND THE RICH HISTORY AND CULTURE, TO THE SIGHTS AND SOUNDS OF THE ISLANDS.



DAY 1

DEPART PAPEETE, TAHITI (9.30AM)

There is a sense of excited anticipation on the dock as passengers board the ship and the last cargo is loaded. The voyage begins in true Polynesian style with a spirited Marquesan dance show and cocktails around the pool. As Aranui 5 heads northeast and Tahiti fades into the distance, there is plenty of time to settle in and meet your crew and fellow adventurers and get to know the ship's lively and multitalented crew.



DAY 2

TUAMOTU ARCHIPELAGO TAKAPOTO

After breakfast we get our first glimpse of the glittering blue lagoon of the Takapoto atoll. Once the ship has anchored, we go ashore by barge. After a short walk through the village and a visit to the brightly coloured church, we arrive at a picture-perfect white coral beach for a barbecue picnic lunch. With local musicians providing the soundtrack of the South Seas on ukelele and guitar, we spend a lazy afternoon snorkelling and swimming in the warm, translucent waters of the lagoon.





DAY 3

AT SEA

After a leisurely breakfast you might like to take a dip in the pool, sunbathe on one of the decks, indulge in a spa treatment or read or chat in the comfortable lounge. There is also a library, gym, boutique and four bars to explore, or you may choose to retreat to the privacy of your suite or stateroom and dream of the adventures that lie ahead.

DAY 4

THE MARQUESAS ISLANDS

NUKU HIVA: TAIIOHAE, HATIHEU AND TAIPIVAI

At first light we sail into Taiohae's spectacular bay, a giant volcanic crater surrounded by towering cliffs. As the Aranui 5 unloads at the dock, there is a chance to explore Taiohae, the small administrative capital of the Marquesas. After a tour of the Cathedral Notre Dame, famed for its stonework and wood sculptures, we get into 4WDs and head for the hills. Taiohae Bay is where the young sailor Herman Melville jumped ship in 1842. Following his escape route up the same winding mountain tracks and through jungle-like

valleys, we arrive at the archaeological site of Kamuihei where a troupe of dancers perform in a magical setting on an ancient stone platform beneath a giant 400-year-old Banyan tree. In the village of Hatiheu we have lunch at Chez Yvonne, one of the best restaurants in the Marquesas, where the speciality is pork baked in an underground oven as well as traditional Marquesan delicacies including breadfruit, poisson cru, taro and sweet red bananas. In the afternoon we travel to the valley of Taipivai, where Melville wrote his famous book *Typee*. The area is dotted with stone tiki gods, sacred ritual sites (marae) and stone platforms (paepae) where the Taipi people built their houses, as well as petroglyphs of birds, turtles and fish. Meanwhile hikers can follow a steep trail to a ridge for breathtaking views of the beautiful Anaho Bay, where the Scottish writer Robert Louis Stevenson spent three weeks during a South Seas voyage in 1888.

DAY 5

UA POU: HAKAHAU AND HAKAHETAU

After a short overnight voyage, dawn reveals the extraordinary jagged pinnacles that have given Ua Pou the name 'Cathedral Island'. Smiling locals turn out to greet the Aranui 5 at

the dock in the small town of Hakahau.

As the crew busy themselves unloading cargo, passengers can take a 40-minute walk for a bird's eye view of the harbour before exploring the town. The cultural and agricultural centre on the waterfront is a highlight and an opportunity to taste a variety of local fruit and pick up some unique souvenirs including pieces carved from the exquisitely patterned volcanic flower stone. Before a traditional buffet lunch at Tata Rosalie's Restaurant, we are treated to a performance by some of the finest dancers in the Marquesas, including the spectacular Bird Dance, for which Ua Pou is famed. In the afternoon we sail around the rugged northern tip of the island and drop anchor off Hakahetau where we go ashore by barge and spend a relaxed couple of hours exploring the village.

DAY 6

HIVA OA: PUAMAU AND ATUONA

Follow our expert guides to the mysterious jungle ruins of Puamau, where we visit one of the Marquesas' most significant archaeological sites at Mea'e Ipona that is noted for its tikis (ancient human-like religious sculptures). These haunting and sometimes frightening statues remind us of the often fearsome ancient civilisations. Of particular interest is the largest



tiki in the Marquesas that stands over two metres high, a six-fingered tiki that is said to hold significant spiritual power, and another that is a revered symbol of childbirth.

Our next port of call is Atuona, the village where the French painter Paul Gauguin spent the last years of his life. It was also the home of Belgian singer/composer Jacques Brel who, like Gauguin, lived out his last days in this little piece of paradise. After entering Atuona harbour and docking at high tide, we visit the Gauguin and Brel museums, a replica of Gauguin's 'House of Pleasure', and the final resting place of both men in the frangipani-scented village cemetery high on a hill overlooking the bay. The more active can also join a one-hour hike to a spectacular viewpoint above the village or, if the weather is fine, sign up for an adventure on horseback. Lunch is another traditional Marquesan feast at Hoa Nui restaurant followed by free time to shop for local crafts or check out the General Store.



DAY 7

FATU HIVA: OMOA AND HANAVAVE

The first European contact with the Marquesan people occurred here in 1595 when the Spanish, thinking they had reached the Solomon Islands, arrived at Fatu Hiva. It is the

most lush and remote island of the Marquesas and also a centre of Marquesan crafts. In the village of Omoa we see women making tapa cloth in the traditional way by beating mulberry banyan or breadfruit tree bark. We are also shown how the women make the wonderfully fragrant umu hei bouquets that they wear in their hair. Ink drawings on tapa, hand-dyed pareos and monoi coconut oil are among the most highly prized souvenirs at Omoa's arts and crafts centre. While the Aranui 5 sails up the west coast to one of the most beautiful bays in the world, the Bay of Virgins at Hanavave, those who are feeling energetic can make the 16-kilometre trip on foot. It is a moderately challenging but hugely rewarding mountain walk with a picnic stop at the top. The descent into Hanavave offers spectacular views of soaring volcanic peaks and the Aranui 5 at anchor in the bay below. Meanwhile those who have travelled to Hanavave on the ship have time to explore the village and enjoy a performance by local dancers.

DAY 8

TAHUATA: VAITAHU

This is the smallest of the Marquesas inhabited islands and was the first to trade with Europeans. Captain Cook named the island's Resolution Bay after landing here in 1774. The huge church, built by the Vatican in the 1970s, is worth seeing for its wood carvings and stained-glass windows. The island is also famed for its bone carving and you will find plenty of bone jewellery among the handicrafts for sale here. While the Marquesans would once have carved objects from the bones of their ancestors, you will be relieved to find they now use the bones of cows, whales and pigs rather than humans! For lunch we head to Kokuu Beach, one of the most beautiful in the Marquesas, for a barbecue picnic followed by a relaxed afternoon spent swimming or lying in the shade of the pandanus trees.

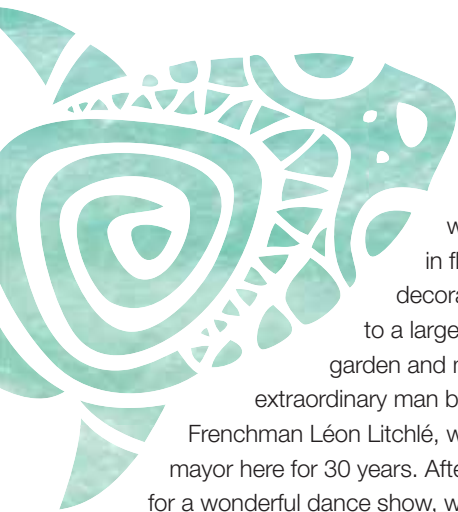
DAY 9

UA HUKA: VAIPAE, HANE AND HOKATU

Everyone gathers on deck at dawn to witness one of the most extraordinary maritime manoeuvres in the world when Aranui 5 has to make a 180-degree turn in the narrow mouth of Vaipae's Invisible Bay. With no more than about 20 metres to spare on either side, it is a highly skilful operation in restricted waters. Once ashore, we visit an archaeology museum and an artisan market. Ua Huka is home to the Marquesas' best wood carvers and here you will find a fantastic range of carved items including tikis, manta rays, turtles, bowls and ukuleles.

The island, where the Marquesas' first airstrip was built in 1972, is largely arid and home to





many wild horses and goats. While here, we travel in flower-decorated 4WDs to a large botanical garden and meet the extraordinary man behind it – Frenchman Léon Litchlé, who was mayor here for 30 years. After stopping for a wonderful dance show, we head to the restaurant Chez Celine Fournier in Hane for lunch. Tonight we all let our hair down on the pool deck for an evening of feasting, fanfare and frivolity – Polynesian night! It's a chance to wear flowers in our hair, be entertained by fellow passengers and crew, and dance under the stars.

DAY 10

NUKU HIVA / UA POU

A brief return to our first port of call, Taiohae in Nuku Hiva, allows enough time to disembark and stroll to the village shops and arts and crafts centre. Then we sail back to the village



of Hakahau in Ua Pou, where passengers have a couple of hours to swim at the beach near the dock or pick up some last-minute souvenirs before we farewell the Marquesas.

DAY 11

AT SEA

DAY 12

TUAMOTU ARCHIPELAGO: RANGIROA

At Rangiroa, one of the largest atolls in the world, we stop for a day of swimming and snorkelling or scuba-diving in the warm, turquoise lagoon. Described by some as an underwater jewellery box, these waters are noted for their stunning coloured corals and clouds of tropical fish. Here, there is also the chance to visit a pearl farm where you may find it hard to resist the temptation to buy the ultimate Polynesian souvenir – a perfectly formed, shimmering black pearl.

DAY 13

SOCIETY ISLANDS: BORA BORA

As the Aranui 5 sails into Bora Bora's stunning blue-green lagoon, it's not hard to see why this place is on the bucket list of so many travellers. Of all the islands in French Polynesia, it is arguably the most beautiful with its crystal waters and ring of islets emerging from the coral reef. The castle-like Mount Otemanu stands sentinel above impossibly perfect white sand beaches, and in the emerald waters a kaleidoscope of tropical fish swim among coral gardens. Here you have the opportunity to snorkel while the ship's crew prepares a beach picnic. For an additional cost, you can sign up for a tour of the island by outrigger or bus, swim with manta rays and small sharks, go scuba-diving or take a thrilling helicopter ride over the lagoon.

DAY 14

ARRIVE PAPEETE – TAHITI, 9AM





Local TREASURES

Traditional arts and crafts are experiencing a healthy revival throughout the Marquesas and there are many opportunities on this voyage to meet local artisans, see them at work and buy some unique pieces. At every port of call you will find them – some displaying their wares at simple roadside stalls, others in larger community markets. And every island has a speciality. Among the most prized treasures are intricate wood, bone and stone carvings – keep an eye out for tiki statues or objects carved from rosewood and the unusual and distinctive volcanic flower stone. Also popular are ink drawings on tapa cloth and jewellery crafted



from bones, shells and brilliantly coloured seeds. Other items include baskets and hats woven from pandanus leaves, hand-carved ukuleles, monoi oil and hand-dyed pareos. When it comes to price, bargaining is acceptable to an extent but negotiations should be subtle – a gentle glance and a tilt of the head is often enough to gain a modest discount. Meanwhile, at Takapoto and Rangiroa in the Tuamotu Archipelago, the magnificent black pearl is at the top of the souvenir hunter's wish list. With their magnificent dark, multi-hued sheen, these aquatic gems are distinct from the lustrous white pearls of Australia. While some say the pearls are cheaper in Takapoto, those from Gauguin's Pearl Farm in Rangiroa have higher quality control with a wider range of styles and settings.





YOUR
Home.
IN THE *islands*

ON THE ARANUI 5 ADVENTURE DOESN'T MEAN HARDSHIP. YOU CAN BE AS ACTIVE OR AS RELAXED AS YOU LIKE. WHILE THE VESSEL STILL HAS ALL THE BUZZ AND EXCITEMENT OF A WORKING SHIP, PASSENGER ACCOMMODATION HAVE BEEN DESIGNED TO A HIGH STANDARD OF STYLE AND COMFORT. THERE IS EVEN AN ONBOARD SPA FOR THOSE WHO FEEL LIKE A BIT OF PAMPERING AFTER A HARD DAY'S EXPLORING.

The Aranui 5 voyage is as much about the experience of being on a cargo ship as the fascinating excursions ashore. There is nothing like watching the muscular Polynesian crew go about their daily tasks and witnessing the kaleidoscope of activity as the ship's cranes swing into action unloading everything from sugar to cars, trucks and building materials, and loading fresh produce such as copra (dried coconut), citrus fruits, fish and noni juice to take back to Papeete. And because it is a working ship, methods of disembarking and embarking vary according to port access. At some islands the ship is able to tie up at the dock, while at others it has to drop anchor and ferry passengers and cargo ashore by barge. But this is all part of the adventure.

When you are tired of watching the cargo operations, there is a full program of activities including a series of lectures about the Marquesas and the part played by Europeans and Polynesians in shaping their history. There is also a range of Polynesian-themed classes at which you can pick up some new skills. Sign up for a ukulele or dance class and you may even find yourself performing alongside the crew members of the Aranui band after dinner! Or you might like to simply relax on one of the sundecks, take a dip in the pool, work out in the well-equipped gym or indulge in a spa treatment. With four bars, a comfortable lounge and library, the ship never feels crowded.

In the spacious restaurant, the emphasis is on French and Polynesian cuisine. Three meals are served daily with a complimentary glass of wine offered at lunch and dinner. Tea and coffee are always available in the bars and lounge. Daily fare comprises a light continental or hot breakfast with





fresh fruit, cereal, juices, tea and coffee. Lunches are usually lighter and often include fresh, crisp salads and fruit. Three-course dinners begin with a light starter followed by a main course often featuring locally sourced produce, including the freshest fish you will ever taste. Of course, there are vegetarian options too.

Dress is 'South Seas casual' – think a colourful shirt, dress or pareo and perhaps a fragrant tiare flower behind your ear, but definitely no need for a tux.

The Aranui 5 has taken freighter cruising to a new level, offering more passenger space and facilities, a higher level of comfort and more balcony suites than its predecessor. All suites, staterooms and public areas are airconditioned and there are two passenger lifts for easy access between decks. Accommodation includes 32 suites, ranging from the sprawling Presidential Suite to 8 Royal Suites, 21 Premium Suites and 2 Junior Suites.

There are 28 Superior Deluxe with private outdoor balconies and 40 Staterooms with private facilities. There are also 24 dormitory-style berths in C-Class with shared facilities.

A doctor travels on each voyage and the onboard infirmary is equipped to deal with most first-aid requests and emergencies.

There are internet facilities in the library or you can use your own device to connect via Wi-Fi when the ship is in or near port. Satellite calls can also be made through the radio room if needed.

Guests can use the self-serve laundry and the onboard boutique has a wide range of books, souvenirs, toiletries, clothing, sweets and snacks.

Suites & CABINS



PRESIDENTIAL SUITE (1):

More like an apartment at sea than a cabin, this is the jewel in the crown. From its position on the top Sky Deck, it offers sweeping views through sliding glass doors, a 12m² private outdoor balcony and 41m² of interior space spread across three separate rooms – a lounge with a built-in bar and sofa bed, dining room, and master bedroom with a walk-in wardrobe, dressing table, en suite bathroom and king size bed. Other features include a second bathroom, desk, fridge, safe, hairdryer and two flatscreen TVs.



ROYAL SUITE (8):

Situated in prime prime position at the front on the Boat Deck, Veranda Deck, Pool Deck and Sun Deck, these offer not only great views from their 9.5m² private corner balconies with sliding glass doors, but also a generous 22m² of interior space. The bedroom, with king-sized bed, walk-in wardrobe, dressing table and en suite bathroom, is divided from the lounge area by a decorative filigree screen. The accommodation includes a separate sofa bed, flatscreen TV, fridge, safe and hairdryer.



PREMIUM SUITE (21):

These exterior cabins, located on the Veranda Deck and Pool Deck, have 4m² private outdoor balconies with sliding glass doors and 18m² of interior space. As with the Royal Suites, the bedroom has a king size bed, dressing table, and en suite bathroom and is separated from the living area by a filigree screen. The accommodation also includes a separate sofa bed, wardrobe, flatscreen TV, fridge, safe and hairdryer.



JUNIOR SUITE (2):

Located on the Veranda Deck, these offer 18m² of interior space and are similar to the Premium Suites, the main difference being they have no balconies. Each has a bedroom with king size bed, wardrobe, dressing table, hairdryer and en suite bathroom. A living area, separated by a filigree screen, has a flatscreen TV, sofa bed, fridge and safe.

SUPERIOR DELUXE (28):

Each of these staterooms has a 4m² private outdoor balcony and 14.5m² of interior space. Situated on the Main Deck, Upper Deck, Sun Deck and Sky Deck, accommodation includes a queen-size bed, bathroom, desk, wardrobe, flatscreen TV, fridge, safe and hairdryer. With these, there is the option to connect to an adjacent room.



DELUXE (3):

Similar to Superior Deluxe Staterooms with same size private outdoor balcony but slightly smaller interior (13m²). Located on either the Pool Deck or Sun Deck, accommodation includes king size bed, wardrobe, desk, bathroom, flatscreen TV, fridge, safe and hairdryer.



STATEROOM (40):

With an interior space measuring 11m², these outside ocean view cabins (with portholes) on the Lower Deck, Main Deck and Boat Deck have a choice of a king size bed or two singles. Each has its own bathroom equipped with shower and hairdryer, plus a desk, wardrobe, flatscreen TV and safe.



CLASS C (4x4P_{AX}):

Dormitory-style accommodation on the Upper Deck with 12.5m² of interior space featuring bunk beds for up to four people, a bathroom and wardrobe.



CLASS C (1x8P_{AX}):

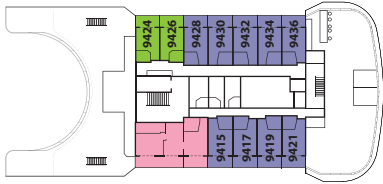
Larger dormitory on the Upper Deck with 26.5m² of interior space and a sitting area. Includes bunk beds for up to eight, two bathrooms and wardrobe.



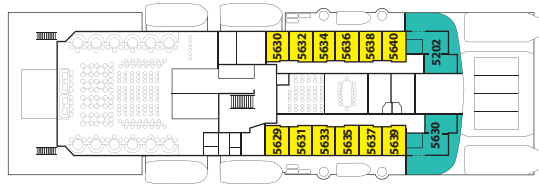


DECK PLAN

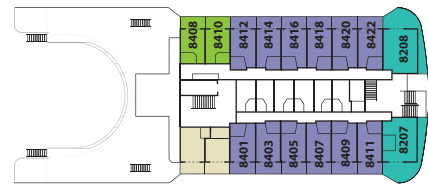
Armani 5



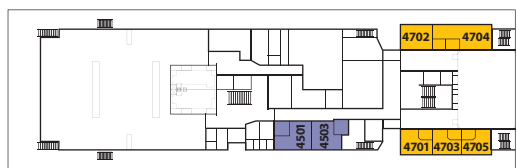
SKY DECK - 9
 Presidential Suite
 Superior Deluxe
 Deluxe



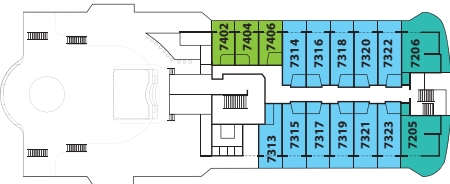
BOAT DECK - 5
 Royal Suite
 Stateroom



SUN DECK - 8
 Royal Suite
 Superior Deluxe
 Deluxe



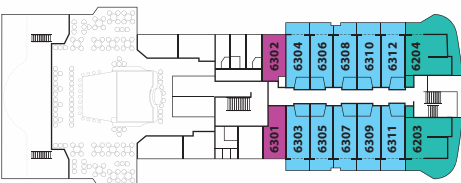
UPPER DECK - 4
 Superior Deluxe
 Class C



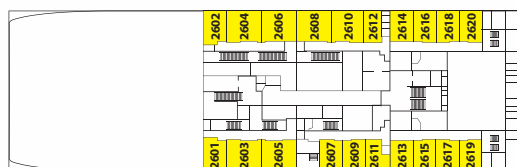
POOL DECK - 7
 Royal Suite
 Premium Suite
 Deluxe



MAIN DECK - 3
 Superior Deluxe
 Stateroom



VERANDA DECK - 6
 Royal Suite
 Premium Suite
 Junior Suite



LOWER DECK - 2
 Stateroom

- Presidential Suite
- Royal Suite
- Premium Suite
- Junior Suite
- Superior Deluxe
- Deluxe
- Stateroom
- Class C

FAST FACTS:

Length:	126 m
Width:	22 m
Speed:	15 knots
Dead Weight:	3200 tonnes
Passengers:	254
Dining Room:	1
Lounges:	2
Bars:	4
Boutique:	1
Pool:	1
Spa:	1
Lifts:	2
Gym:	1

Disclaimer: The illustrations are artist impressions and are not actual images of the ship.

Ship

INFORMATION



FOOD

Meals are served in an informal, family-style setting in our dining facilities. Special consideration for medically prescribed diets must be requested at the time of booking or not less than three weeks in advance of sailing date.

LOCAL CURRENCY

The unit of exchange is the French Pacific Franc (XPF).

LOCAL TIME

The Marquesas are half an hour ahead of Tahiti. Thus, when it's noon in Tahiti, it's 12:30pm in the Marquesas.

CLIMATE AND PACKING SUGGESTIONS

Clothing that is informal, comfortable and easily washable is most practical aboard the ship. In addition to shorts, jeans or slacks, T-shirts and a bathing suit, a rain poncho or coat and warm sweatshirt or light jumper for chilly evenings are recommended. Comfortable shoes are essential for walking ashore over coral reefs.

Tennis shoes or sandals are recommended. For women, the native 'pareo', made of colorful fabric which can be wrapped in a variety of styles, is a versatile choice for both casual and festive occasions.

SHIP'S BOUTIQUE

The ship's boutique sells a variety of supplies including mosquito repellent, sundries, clothing, and local souvenirs.

ELECTRICAL CURRENT

Each cabin is equipped with 220 volt, 50 cycle AC (European-style outlet).

EMERGENCY TELEPHONE

In an emergency, it is possible to place telephone calls through our shipboard communications and to contact the vessel through CPTM's office in Tahiti.

LAUNDRY

There are washing and drying machines on board. Dry cleaning is not available.

MEDICAL

There is a doctor or physician on board the vessel. If any person has or is suffering from a serious ailment or condition, they should seek the advice and consent of their personal physician prior to embarking on the vessel. The right is reserved to refuse passage to anyone in such a state of health or physical condition as to be unfit to travel or whose condition, for whatever reason, might be dangerous to the individual or other passengers.

SHORE VISITS

Visits ashore are limited to the time required by cargo operators and port restrictions. Port time may range from just a few hours to a day or more. While shore excursions may be available at some ports of call, Compagnie Polynesienne de Transport Maritime neither owns nor operates nor exercises any control over shore excursions arranged at any port of call. The company, its agents and employees do not assume any responsibility in connection with the operations of said programs. The Company accepts no responsibility or liability for the failure of any operator to perform any said program and/or for any injury, damage or loss however caused or arising therefrom.

TRAVEL FUNDS

Travellers cheques and credit cards may be used to pay for shipboard expenses. American Express, Visa and MasterCard will be accepted. Travellers cheques can be cashed on board, personal cheques cannot. Euro, USD, AUD, NZD, CAD currency notes can also be exchanged.

VALUABLES

Electronic lock boxes are available on board. However, CPTM cannot accept custody or responsibility for passengers' money or other valuables while aboard the vessel.

GENERAL INFORMATION AND CONDITIONS

RESERVATIONS POLICIES

Reservations: See your Travel Agent or contact:

Compagnie Polynesienne de Transport Maritime
P.O. Box 220 Papeete, Tahiti.
Telephone (689) 4042 6242 Fax (689) 4043 4889
Email: reservations@aranui.com

Passenger contract: Passengers are carried subject to the stipulations of the Passage Contract Ticket of Compagnie Polynesienne de Transport Maritime. The passage ticket is non-transferable and is valid only for the person(s) who originally purchased the ticket.

Cancellations: After your booking has been confirmed by CPTM, should you cancel for any reason, a cancellation fee of (AUD) \$125 per person if booked in Australia or (NZD) \$136 if booked in New Zealand

- If cancelled 90 to 61 days before scheduled departure – 1/4 of the total fare is retained.
- If cancelled 60 to 45 days before scheduled departure – 1/3 of the total fare is retained.
- If cancelled 44 to 30 days before the scheduled departure date – 2/3 of the total fare is retained.
- If cancelled less than 30 days or non-appearance at cruise departure date – the total fare will be retained.

Changes: After CPTM issues a confirmation, changes to the confirmed departure date made at passenger's or travel agent's request, less than 90 days prior to the confirmed departure date, will be subject to the same penalties applied to cancellations.

Insurance: Insurance is available to help recover non-refundable travel expenses for trip cancellations or interruption, baggage damage or loss and trip accident. We recommend that passengers consider these coverages. Consult your travel

agent or insurance agent for specific details concerning coverage and exceptions.

CRUISE INFORMATION

Rates include: Cruise transportation and shipboard accommodation, meals and excursions. Fares are based on per adult double occupancy. All published fares are quoted in Australian Dollars (AUD) or New Zealand Dollars (NZD), depending on the country of residence and where the booking was made. These fares are correct at the time of printing and are subject to change with or without notice.

Rates do not include: Shipboard purchases, liquor, gratuities, port taxes other than those specifically provided for, and other personal items. Rates quoted at the time of printing are based on current costs and are subject to change up to and including the date of sailing.

Schedule and extra cost provision: If, due to weather or other uncontrollable reasons, you are required to spend one or more additional nights, you will be responsible for your own hotel and meal costs. In addition, because the primary function of vessels in the service of Compagnie Polynesienne de Transport Maritime is to carry freight, the departure dates, ports of call, and duration of cruises may be subject to variation both prior to departure and en route. Freighter passengers should have a flexible time schedule and anticipate the foregoing possibilities. While we do everything possible to inform and assist our clients, neither CPTM nor its agents will assume additional expenses, hotel or meal costs associated with delays or changes in itinerary and schedules.

Itinerary Changes: CPTM pledges to make every effort to operate all

cruises as advertised. CPTM reserves the right to alter or curtail the itinerary, or substitute sightseeing, ports of call or conveyances as deemed necessary.

Transfers: All cruise arrangements originate and terminate from the specified pier or departure point. Transportation is not provided between airport locations and the vessel, or vice versa, unless specified.

Baggage: Stateroom luggage will be accepted on the day of sailing at boarding time only. All personal luggage is to be stored in passenger's cabin as we are unable to store it in other areas aboard the ship. Passengers should clearly label all luggage with their name, vessel, cabin number or deck assignment number and date of sailing. Valuables should be hand carried on board. We recommend that travellers take out a baggage damage or loss policy through their insurance agent or travel agent.

Travel documents and entry requirements: All passengers must have valid passports for entry into French Polynesia. Those visitors who are not citizens of the United States or Canada or from the European Economic Community and those planning to stay in French Polynesia for more than one month should contact their travel agent for visa requirements. All visitors must have a round trip airline ticket.

Inoculations: At time of printing, vaccinations are not required. Passengers should consult their travel agent for latest requirements.

Refunds: Requests for refunds should be directed to the agency that sold you the cruise. No refunds will be made on unused features, such as meals, voluntarily omitted by the passenger.

Responsibility: All cruises outlined herein are carried out under the business management of Compagnie Polynesienne de Transport Maritime (CPTM) and are governed by the terms and conditions printed on the Passage Contract Ticket which may be inspected at the Company's office.

Australia – New Zealand
Aranui Cruises (representative)

P.O. Box 36, Taylors Lakes VIC 3038, Australia
Telephone 61 3 9449 3778
Fax 61 3 9449 2433
Email info@aranuicruises.com.au
Website www.aranuicruises.com.au

Compagnie Polynesienne de Transport Maritime
P.O. Box 220 Papeete, Tahiti
Reservation (689) 4042 6242
Email reservations@aranui.com
Fax (689) 4043 4889

CPTM – U.S.A. Office
2028 El Camino Real South, Suite B,
San Mateo, CA 94403
Telephone (650) 574-2575 | (800) 972-7268
Email cptm@aranui.com
Website www.aranui.com

Europe
Contact Vaima Islands Consulting
Telephone 33 143312534
Email brochures@aranui.info

Disclaimer: CPTM has made every effort to ensure the accuracy of this brochure. CPTM will not be held responsible for any errors or omissions contained therein.

Credits: Editorial content: Harriet Upjohn and Roderick Eime
Photography: Lionel Gouverneur





ARANUI 5

WWW.ARANUICRUISES.COM.AU



YOUR TRAVEL AGENT

